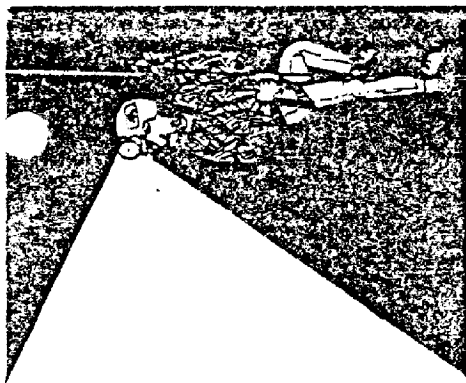


SEPTEMBER 1982

BIRMINGHAM GROTTO NEWSLETTER

NATIONAL SPELEOLOGICAL SOCIETY



The Birmingham Grotto Newsletter is published approximately twelve times a year by the Birmingham Grotto of the National Speleological Society.

Subscription and Membership fees are now due. Annual subscription rates are included in the \$4 membership fee. Outside the Birmingham area, the subscription rate is only \$2. All are prorated from October.

Editors: Lynn McGill & Nancy Boice
5279 Paramount Drive
Birmingham, AL 35210

Submit materials for publication directly to the Editors. Deadline is the 20th day of the month preceding the month of issue.

ALL OFFICIAL GROTTO MAIL (INCLUDING EXCHANGES) ADDRESSED TO ANYONE OTHER THAN THE EDITORS SHOULD BE SENT TO THE GROTTO PO BOX. THIS ASSURES THAT THE MESSAGE WILL GET THROUGH

P. O. Box 3302
Birmingham, AL 35255

Officers for the 1981-82 year are:

CHAIRMAN - Greg McGill 956-1267

VICE-CHAIRMAN - Mike McEachern

SECRETARY - Dottie Alexander

TREASURER - Joe Domnanovich

TRIP COORDINATOR - Steve Hall

NEWSLETTER REVIEW

The Petroglyph. Volume 18, No.1, Jan-June 1982. Don Shofstall reported on a Cave Radio experiment in Glovers Cave. The purpose was to accurately locate cave features on the surface above them. To do this, one group took a radio coil a prearranged distance into the cave, set it down, and started a battery powered transmitter. Meanwhile the above ground crew zeroed in on the signal and pinpointed the location of the radio coil. In addition to the radio coil a voice receiver was carried into the cave while the above ground group carried a voice transmitter. This way the two groups could locate points and move through the cave at a comfortable pace. If the in-cave crew needed to communicate with the above ground crew the radio coil and receiver could be used to transmit morse code.

The Huntsville Grotto. Volume 23, No.7, July, 1982. Marion Smith and company connected Houston Hollow and Geiger caves to give a total depth of about 300' and length of 10,000'.

The Michiana Caver. Volume 9, No.6, June 1982. Dan McDowell and Dick Greer agreed to involve the Northern Indiana Grotto in mapping Dunbar Cave. Dunbar Cave is a closed commercial cave that lies in a State Park in Clarkeville Tenn. Two cave divers dove a 350' long siphon. At the end of the siphon a dome room, racoon tracks, and at least 4500-5500' of main stream passage were seen before turning back. By entering a large sinkhole in the same area the cavers made the connection to Dunbar Cave adding thousands of feet of passage to the known cave.

CALENDAR

Oct. 2 - trip to Gross Skeleton - meet at Krystal in Tarrant at 7:00.

Oct. 15-17 TAG Fall Cave-In. camp at KOA Camp ground in Valley Head Al. near Sequoia Caverns

Oct. 23- trip to Graves Cave - Call Dave Caudle 647-2221 for details

The 1983 NSS Convention will be held during late June or early July in Lewisburg, West Va.

ANNOUNCEMENTS

Congratulations to Larry Moore on his Oct. 9 wedding

Howell named

Kidd, Wheeler & Plosser Inc., architects and planners, has announced that David Howell has been made a project architect. A graduate of Birmingham-Southern College and Auburn University, he has been with Kidd, Wheeler & Plosser since 1977.

The Birmingham Grotto Newsletter is published approximately twelve times a year by the Birmingham Grotto of the National Speleological Society.

Subscription and Membership fees are now due. Annual subscription rates are included in the \$4 membership fee. Outside the Birmingham area, the subscription rate is only \$2. All are prorated from October.

Editors: Lynn McGill & Nancy Boice
5279 Paramount Drive
Birmingham, AL 35210

Submit materials for publication directly to the Editors. Deadline is the 20th day of the month preceding the month of issue.

ALL OFFICIAL GROTTO MAIL (INCLUDING EXCHANGES) ADDRESSED TO ANYONE OTHER THAN THE EDITORS SHOULD BE SENT TO THE GROTTO PO BOX. THIS ASSURES THAT THE MESSAGE WILL GET THROUGH.

P. O. Box 3302
Birmingham, AL 35255

Officers for the 1981-82 year are:

CHAIRMAN - Greg McGill 956-1267

VICE-CHAIRMAN- Mike McEachern

SECRETARY - Dottie Alexander

TREASURER - Joe Domnanovich

TRIP COORDINATOR - Steve Hall

NEWSLETTER REVIEW

The Petroglyph. Volume 18, No.1. Jan-June 1982. Don Shofstall reported on a Cave Radio experiment in Glovers Cave. The purpose was to accurately locate cave features on the surface above them. To do this, one group took a radio coil a prearranged distance into the cave, set it down, and started a battery powered transmitter. Meanwhile the above ground crew zeroed in on the signal and pinpointed the location of the radio coil. In addition to the radio coil a voice receiver was carried into the cave while the above ground group carried a voice transmitter. This way the two groups could locate points and move through the cave at a comfortable pace. If the in-cave crew needed to communicate with the above ground crew the radio coil and receiver could be used to transmit morse code.

The Huntsville Grotto. Volume 23, No.7, July, 1982. Marion Smith and company connected Houston Hollow and Geiger caves to give a total depth of about 300' and length of 10,000'.

The Michiana Caver. Volume 9, No.6, June 1982. Dan McDowell and Dick Greer agreed to involve the Northern Indiana Grotto in mapping Dunbar Cave. Dunbar Cave is a closed commercial cave that lies in a State Park in Clarkeville Tenn. Two cave divers dove a 350' long siphon. At the end of the siphon a dome room, racoon tracks, and at least 4500-5500' of main stream passage were seen before turning back. By entering a large sinkhole in the same area the cavers made the connection to Dunbar Cave adding thousands of feet of passage to the known cave.

CALENDAR

Oct.2 - trip to Gross Skeleton - meet at Krystal in Tarrant at 7:00.

Oct. 15-17 TAG Fall Cave-In. camp at KOA Camp ground in Valley Head Al. near Sequoia Caverns

Oct. 23- trip to Graves Cave - Call Dave Caudle 647-2221 for details

The 1983 NSS Convention will be held during late June or early July in Lewisburg, West Va.

ANNOUNCEMENTS

Congratulations to Larry Moore on his Oct. 9 wedding.

BAT OF THE MONTH
BY John Marshall

Plecotus rafinesquii: Rafinesque's big eared bat

Description: Forearm, 40-46mm; wingspan, 265-301mm. The fur is gray above and nearly white underneath. The base of the hair is black. There are two distinctive large lumps on the upper sides of the snout, and long hairs project beyond the toes (Barbour and Davis, 1969)

Distribution: This species occurs year round and statewide in Alabama. (Hall and Kelson 1959, and Barbour and Davis 1969).

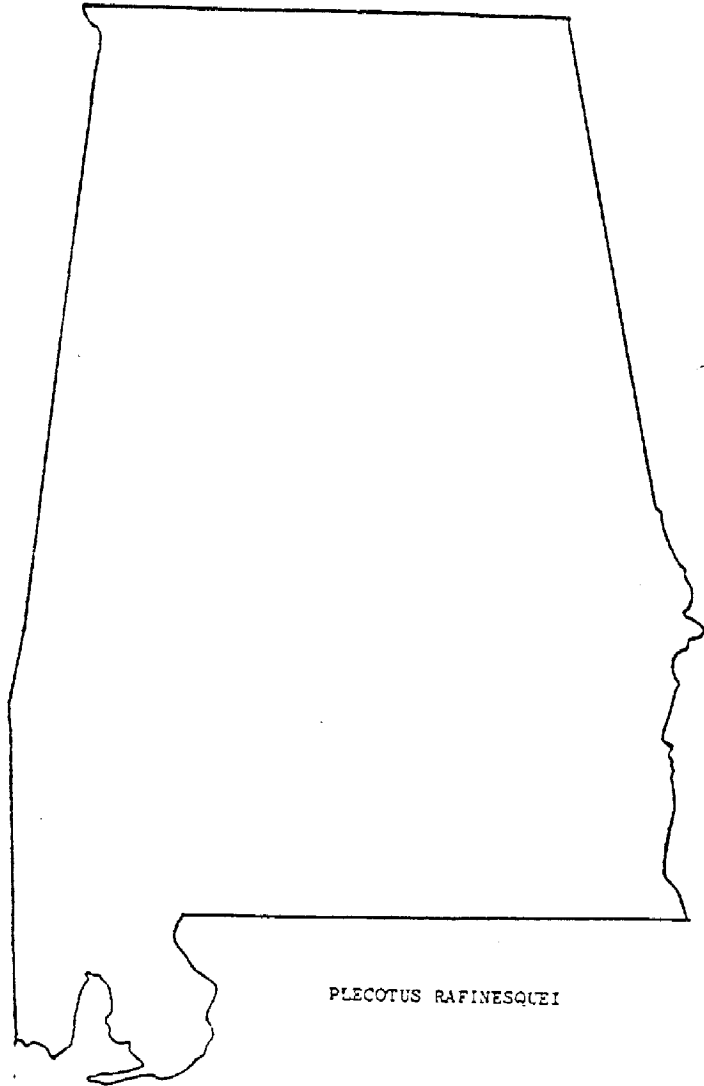
Habitat: Big-eared bats inhabit forested regions. The males are solitary during the summer, roosting in hollow trees, buildings, and crevices. The females roosts in nursery colonies during the summer. They usually use buildings, and less frequently caves. These nursery colonies range in size from a half dozen to several dozen bats (Barbour and Davis 1969).

This species sometimes inhabits attics of occupied houses. They prefer dilapidated buildings, though, that are partially lighted. (Barbour and Davis, 1969).

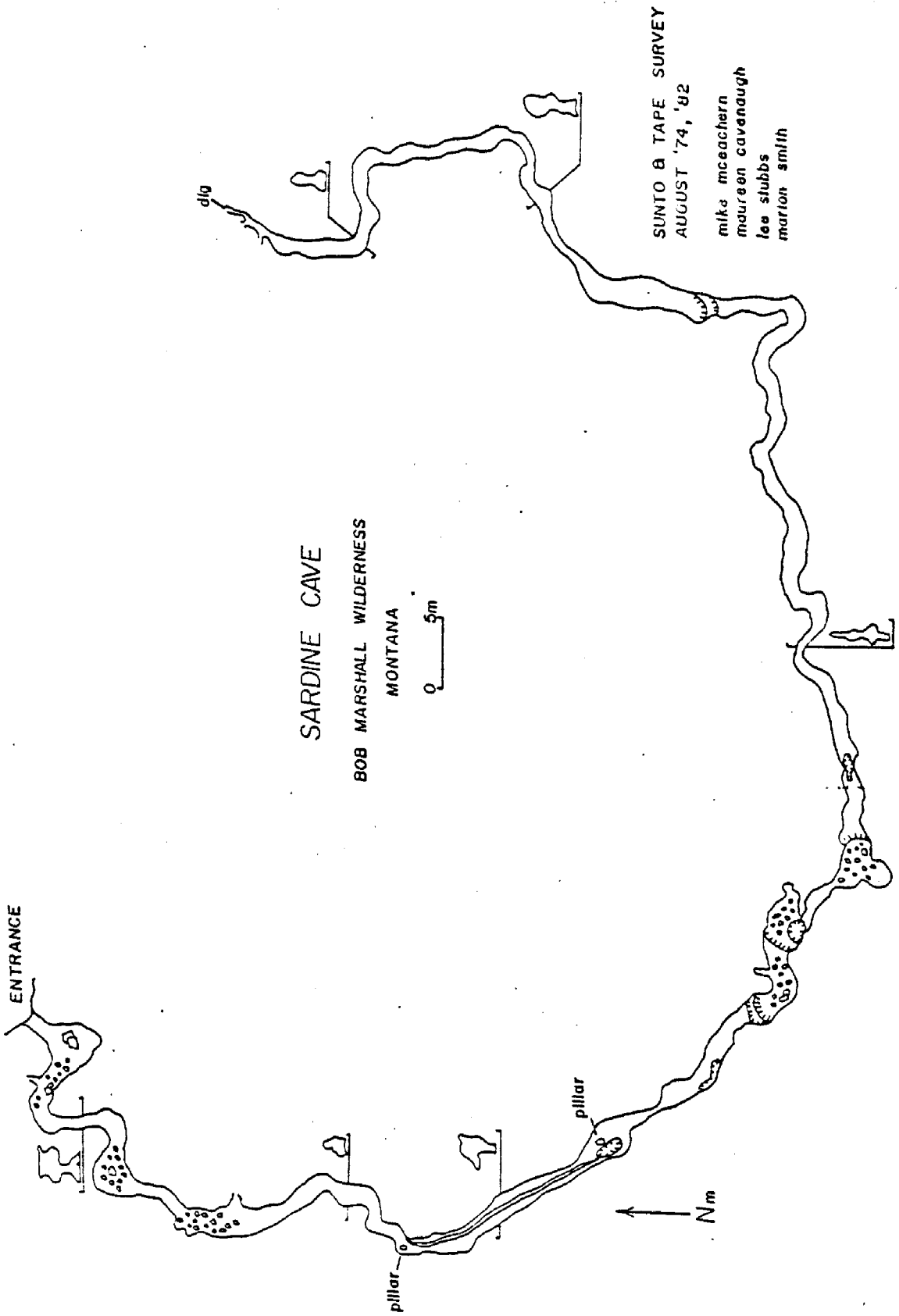
P. rafinesquii winters in caves and mines, usually in the twilight zone within about 100 feet of the entrances. They awaken and move about quite often during the winter. The winter colonies do not obtain great densities (Barbour and Davis, 1969).



Rafinesque's big-eared bat, *Plecotus rafinesquii*.



PLECOTUS RAFINESQUEI



SARDINE CAVE

BOB MARSHALL WILDERNESS
MONTANA

0 5m

SUNTO & TAPE SURVEY
AUGUST '74, '82

mike mceachern
maureen cavenaugh
lee stubbs
marion smith

ENTRANCE

pillar

pillar

N
↑

TRIP REPORT: ASSAULT ON SARDINE
SILVERTIP MOUNTAIN, MONTANA

The summer of '82 marked the 10th season of caving at Silvertip. Six cavers from TAG made the long trip to the Tip this past August. Mike McFachern "the old man of the mountain" led a group from Birmingham including Lee Stubbs, Donna Matthews, and Nancy Boice. Marion Smith and Marilyn Osterlund made the journey from Knoxville. The two groups met, literally, at the end of the road at Spotted Bear on August 3rd. The next 3 days were spent carrying food, caving gear, and camping gear up the 17 mile trail to basecamp. Our efforts were rewarded, because on the evening of our arrival we witnessed an incredible Northern Light display. It was the best any of us had ever seen at the Tip. The lights extended in a bright green band from east to west and danced over our heads--indescribable!

After preliminary and tour trips through Blood Cave, Sunray Cave, Ice Cave and others Mike decided on the project for this season. He wanted to explore and map Sardine Cave. He found the Sardine Entrance several years ago (1974) but never ventured far into the cave as other more impressive entrances were explored.

Sardine lies high on the east karst at an elevation of app. 7,600 feet. The cave has as much potential as any of the others, and it may connect into Blood Cave. Sardine proved to be a very vertical cave with 7 short drops, the longest being app. 40 feet. The drops were easily rigged with only 3 ropes. Lee, Mike, and Marion pushed the cave to a depth of app. 300 feet before it pinched to 3 very small and impassable holes. Sardine did not connect with Blood or the major Silvertip System.

When Sardine was explored, mapped, and derigged, it was time to pack our belongings and head back to "sphulization" and the good ol' Deer Lick Bar. It was good to see that Silvertip and "the Bob" (as the Bob Marshall Wilderness is commonly called) are still there, unchanged, and as pristine as ever.

Nancy Boice

By Greg McNameis

This is a compiled list of caves from Tenn, Ala, and Georgia with total vertical depths exceeding 300 feet. All information listed is currently up to date and accurate to my knowledge. There are obviously more caves known with depths exceeding 300 feet than are listed due to a lack of data, mainly from Georgia.

NAME	Quad	State	TVD
1. ELLISON'S CAVE		GA	1,063 feet
2. Bull Cave		TN	741
3. Gary Self Cave (Roussseau)		AL	651
4. Jewett 2 Cave		TN	637
5. Jewett 1 Cave		TN	615
6. Darton Knob Smokehole		TN	570
7. Bloodstone Cave (Scotts Fork)		AL	562
8. Kelley Ridge Cave		TN	559
9. Fern Cave		AL	570
10. Lunnary Pit		TN	535
11. Engle Double Pit Cave		AL	520
12. Goult's		TN	517
13. Small Cave		AL	517
14. Wilkerson Hollow Horror Hole		TN	513
15. Sumner's Double Pot		AL	512
16. Bear-Hanna Cave		AL	500+
17. Stoned Well		AL	498
18. Fowler Pit #2/Bluedn Ghyll Princeton		AL	498
19. Kno's Canyon Cave		AL	496+
20. Iliad-Odyssey Cave		AL	471
21. Guy's Cave		AL	467
22. Haly's Pit (Flowing Spgs C) Hollytree		AL	460+
23. Thunderhole		AL	460
24. Buckeye Cave		AL	458
25. Wash Pot		AL	453
26. Buck's Pocket Cave		AL	450+
27. Run To The Hill Cave		TN	445
28. Standing Cove Cave		TN	440
29. McRides Cave		AL	435
30. Solution Salt Cave		TN	432
31. Twenty Three Dollar Pit		AL	432
32. Had As A Wet Hen Pit		AL	430+
33. Will's Welsh Well		AL	421
34. Dark Well		AL	420
35. Langston's Cave		AL	417
36. East Caverns		AL	417 feet
37. Three Hollow Cave		AL	411
38. Hill Hole		AL	410+
39. Water Well		AL	402
40. Wet Cave		TN	402
41. Turbling Rock Cave		AL	400
42. Doodlebug Hole		AL	397
43. Norseman Wells		AL	392
44. Lacy Pot		AL	390+
45. Grassy Cove Saltwater C.		TN	367
46. Steale's Wonder Hole		AL	350+
47. Deep Thrust Cave		TN	340
48. Bicentennial Cave		TN	334
49. Bat In The Pocket Cave		AL	311
50. Bennett Cove Cave		AL	300+
51. Jim Cave		AL	300
52. Canyon Cave		AL	300
53. Noe Cave		AL	300

The October '82 Survival Guide had an article about a candle with a five hour burning time. The candles are 3/4" in height with a wide flat bottom which tapers inward to keep them from tipping over. They are made of 155-degree wax which will not become soft inside backpacks. Candle wicks are zinc cored, then dipped into lower-melting-point wax to waterproof them. As the candle burns a pool of melted wax forms around the wick, and gases of vaporized wax are burned by the wicks flame. The Emergency five-hour candle sells at 4 for \$1.25, 12 for \$4.50 and can be purchased from:

Dawn to Dusk Co.,
P.O. Box 23, Dept SG
Westcliff, Co. 81252

EDITORIAL

At the September grotto meeting several grotto members expressed a desire to see more trip reports by our own members about local caves. As co-editor of the BGN I couldn't agree more. The BGN has reached a crisis point. We are no longer receiving any articles about caving locally or anywhere else. The Newsletter can only be as good as the members of the grotto. I feel that each grotto member should find it a personal responsibility to write at least one trip report a year. Then, as editors we would have material to draw from for a quality newsletter. As it stands now, we have to invent articles or pull stories from other sources. No one wants this. Let's keep the newsletter full of current, interesting articles about caving. We need your support.

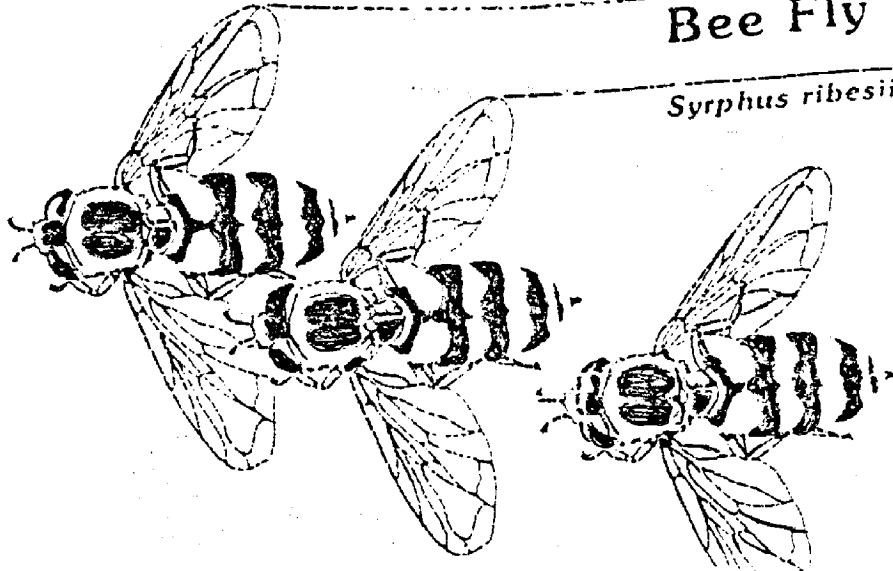
Nancy Boice

NEWS FLASH

October is election month. This means all voting, must pay membership dues.

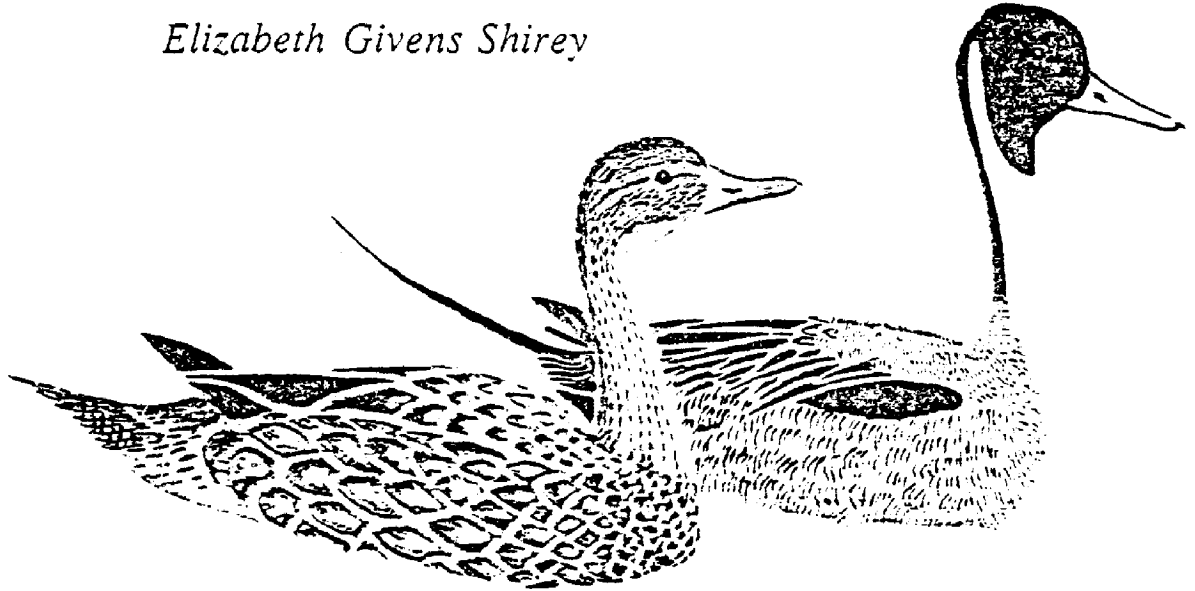
Silver Tip
Bee Fly

Syrphus ribesii



Richard Lawrence Moore

Elizabeth Givens Shirey



Saturday, October 9, 1982

2 o'clock

Eisenhower Chapel, Penn State Campus

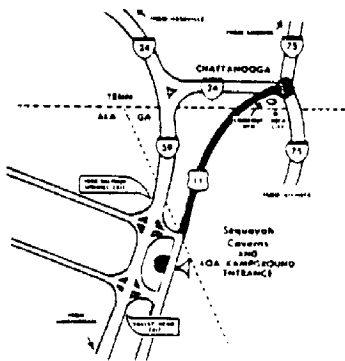
*Reception and Square Dance
immediately follows*

AT

*University Baptist Church
411 South Burrowes Street*

(inside)

5 TH ANNUAL T.A.G. FALL CAVE-IN OCT. 15,16,17 SEQUOYAH CAVERNS VALLEY HEAD, ALA.



Speleo Olympics

Bonfire

Equipment Suppliers

Guided Trips

Door Prizes

Sponsored by
Dogwood City
Grotto



SEND PRE-REGISTRATION TO:

JOHN C. HOWREN 1865 RIDGEWOOD DR. ATLANTA, GA. 30307

4.00 PER PERSON UNDER 12 FREE

BIRMINGHAM GROTTO NEWSLETTER

P.O. 3302

BIRMINGHAM, ALABAMA 35255

NON-PROFIT
U.S. POSTAGE
PAID
PERMIT NO. 3907
BIRMINGHAM, AL.

Fl. Speleo. Society
PO Box 12581
Gainesville, Fl. 32601

IF BOX IS MARKED, THIS IS YOUR LAST ISSUE. PLEASE

PAY DUES.